



DRB20-00236



Request

- Design Review

Purpose

- Proposed restaurant with drive-thru

Street View



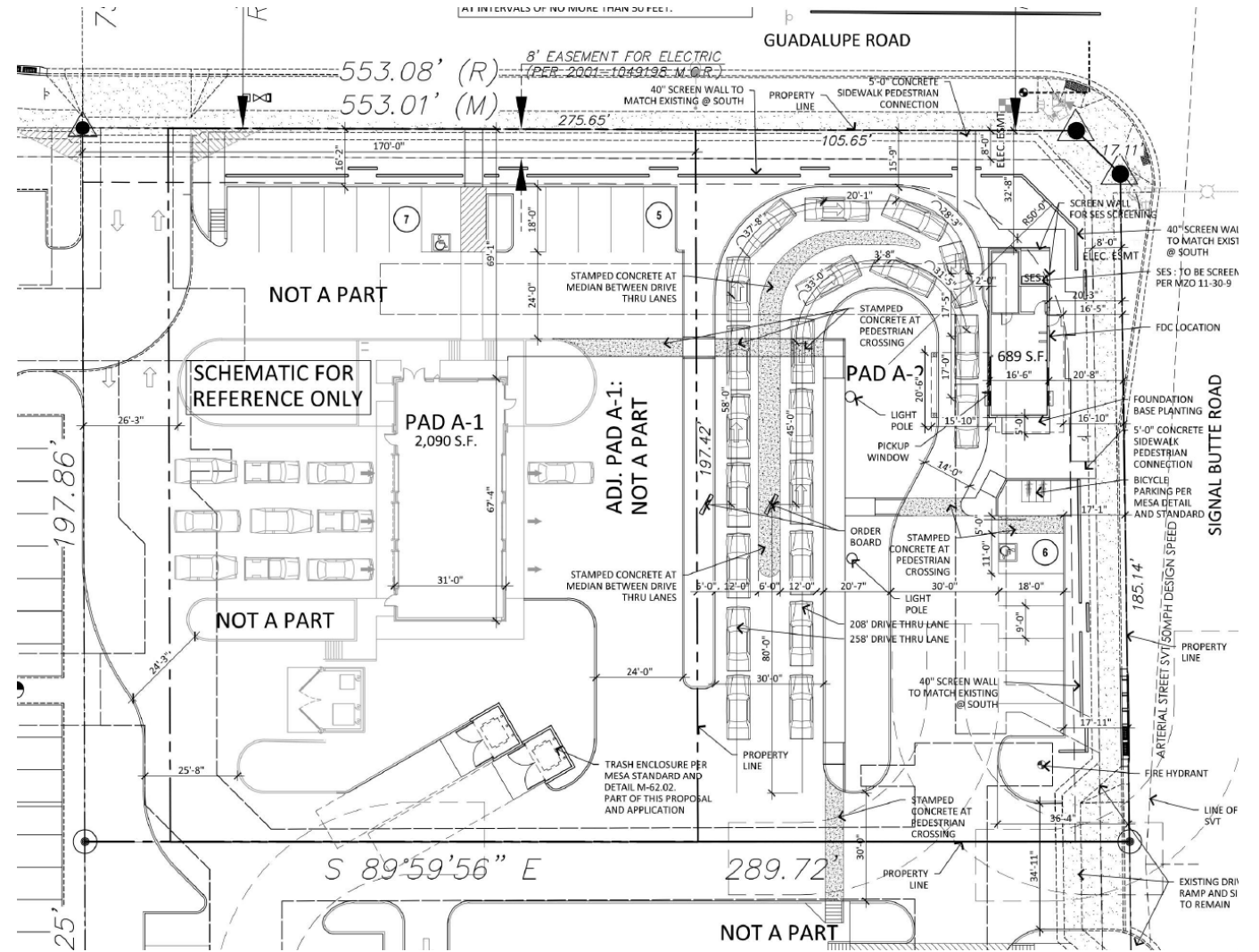
Looking south from Guadalupe Road



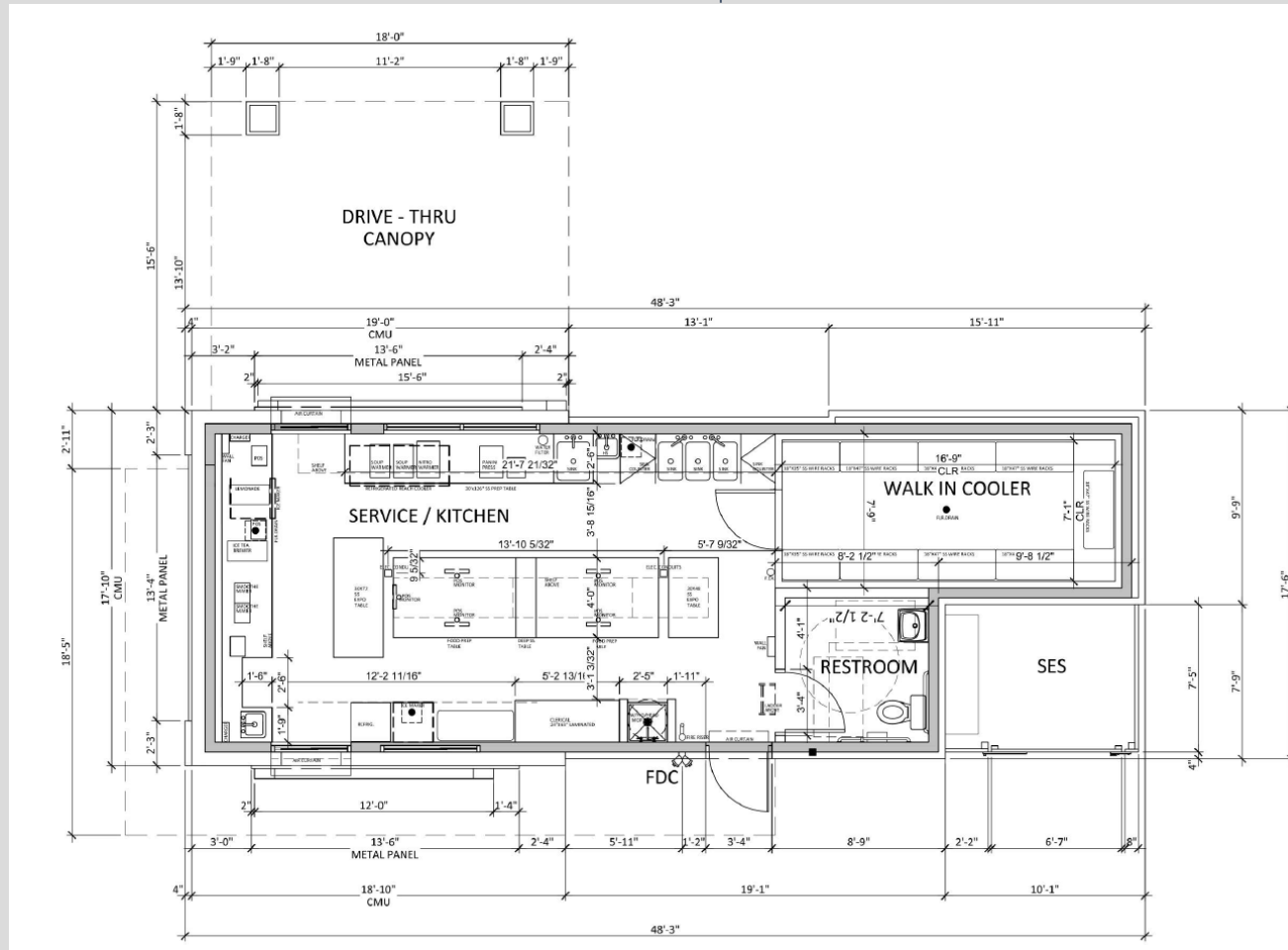
Looking west from Signal Butte Road

Site Plan

- Proposed Salad and Go
- Dual drive thru queuing lanes
- Walk up window on east side



















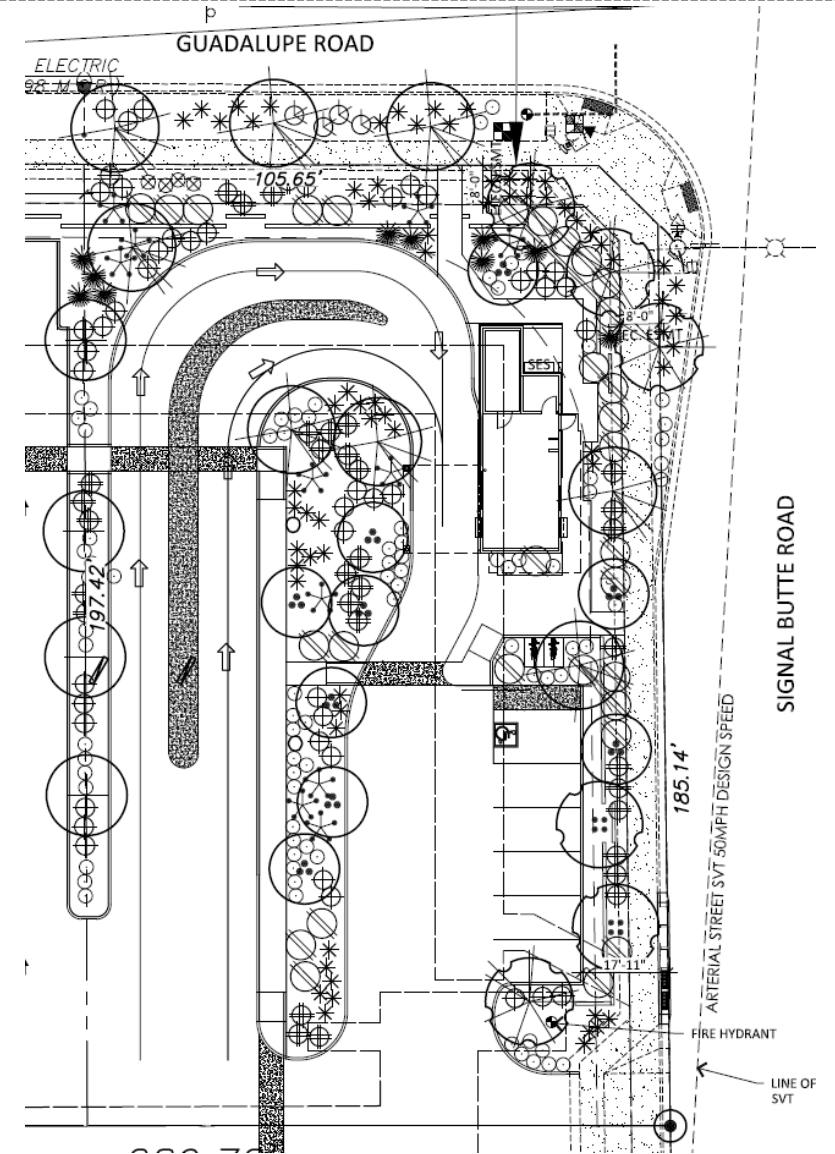
Floor Plan



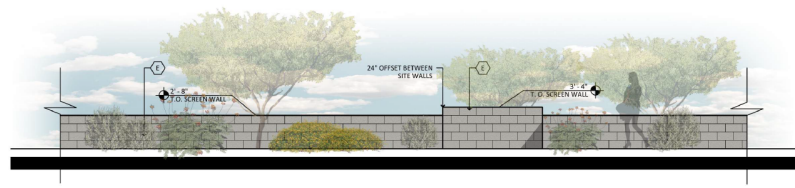
Landscape Plan

LANDSCAPE LEGEND

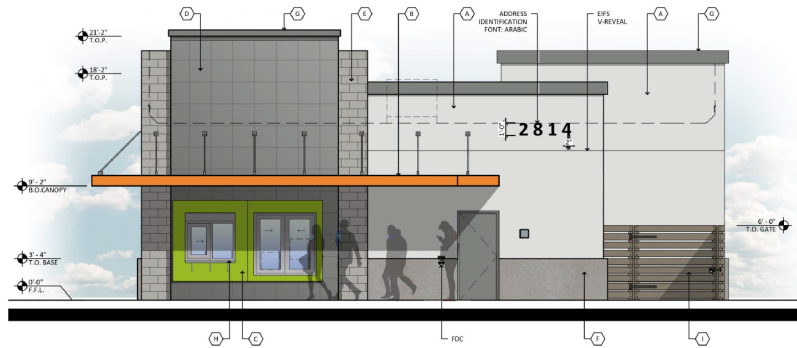
-  CHILOPSIS LINEARIS
DESERT WILLOW 'ARTS'
36" BOX
-  CERCIDIUM PRAECOX
SONORAN PALO VERDE
24" BOX (MATCHING)
-  ACACIA SALICINA
WILLOW ACACIA
24" BOX
-  CHITALPA TASHKENTENSIS
CHITALPA
24" BOX
-  QUERCUS VIRGINIANA CATHEDRAL
LIVE OAK
24" BOX
-  RUELLIA PENINSULARIS
BAJA RUELLIA
5 GALLON
-  CAESALPINIA MEXICANA
MEXICAN BIRD OF PARADISE
5 GALLON
-  DODONAEA VISCOSA
GREEN HOP BUSH
5 GALLON
-  HESPERALOE PARVIFLORA
RED YUCCA
5 GALLON
-  CALLIANDRA CALIFORNICA
BAJA FAIRY DUSTER
5 GALLON
-  LANTANA X
NEW GOLD 1m
5 GALLON
-  ALOE 'BLUE ELF'
BLUE ELF ALOE
1 GALLON
-  LANTANA X
WHITE LIGHTING 1m
1 GALLON
-  YUCCA RUPICOLA
TWISTED LEAF YUCCA
5 GALLON
-  3'x3'x3' SURFACE SELECT
GRANITE BOULDER
MIN. 2000lbs EA. BURY 1/3
-  1/2" SCREENED EXPRESS GOLD
DECOMPOSED GRANITE
2" DEPTH IN ALL LANDSCAPE AREAS



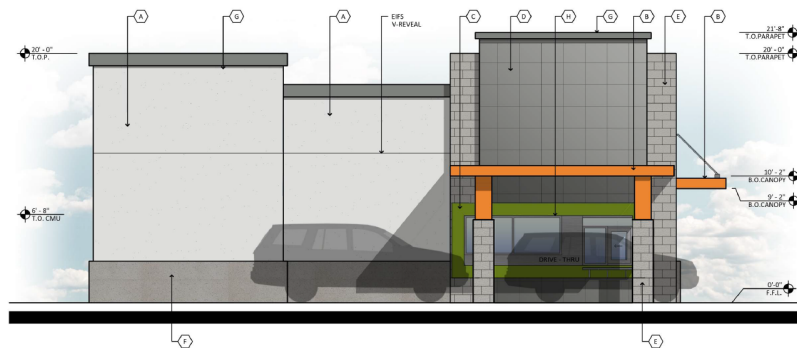
Elevations



SITE WALL ELEVATION
SCALE: 1/4" = 1'-0"



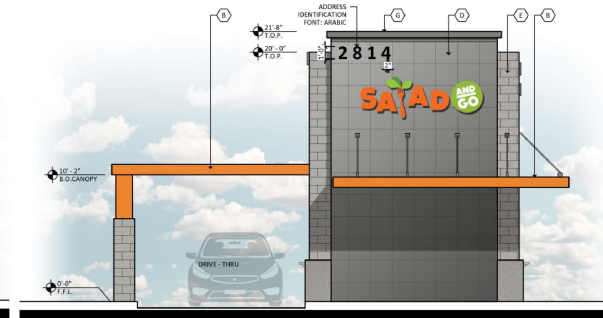
EAST ELEVATION
SCALE: 1/4" = 1'-0"



WEST ELEVATION
SCALE: 1/4" = 1'-0"

MATERIALS & COLORS

 A. STUCCO: MFG: SHERWIN WILLIAMS COLOR: NEBULOUS WHITE SPEC # SW 7004 25G-C2 LRV: 74	 C. METAL PANEL (COLOR TO MATCH): MFG: SHERWIN WILLIAMS COLOR: ELECTRIC LIME SPEC: SW 6921 146-C3 LRV: 42	 F. 8 X 8 X 16 CMU: MFG: SUPERLITE COLOR: GREY STONE FINISH: SMOOTH	 G. METAL CORNICE: MFG: CITYSCAPE COLOR: GREY STONE SPEC # SW 7067 LRV: 22
 D. METAL PANEL (COLOR TO MATCH): MFG: SHERWIN WILLIAMS COLOR: NAVEL SPEC # SW 6887 116-C5 LRV: 35	 E. METAL PANEL: MFG: VBCI SPEC: CF ARCHITECTURAL COLOR: SLATE GRAY	 F. PRE-CAST CONCRETE: MFG: CORESLAB COLOR: DAVIS COLORS LIGHT GRAY (ESK) (CARBON) #0884 FORM LINER (SMOOTH) AGGREGATE: SAND	 H. ALUMINUM STOREFRONT: MFG: KAWNEER FINISH: CLEAR ANODIZED
* SIGNAGE TO BE APPROVED UNDER SEPARATE PERMIT			 I. SCREEN WALL: MFG: TREX COLOR: WINCHESTER GREY



SOUTH ELEVATION
SCALE: 1/4" = 1'-0"



NORTH ELEVATION
SCALE: 1/4" = 1'-0"

TOTAL FACADE MATERIALS CALCULATIONS:

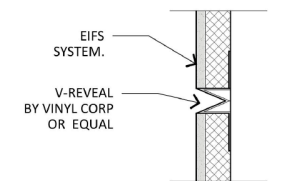
TOTAL FACADE AREA:	2595 S.F.
MATERIALS USED	TOTAL AREA (%)
A. STUCCO - NEBULOUS WHITE	867 S.F. 33.4%
B. NAVEL ORANGE - ACCENT COLOR	98 S.F. 3.8%
C. ELECTRIC LIME - ACCENT COLOR	93 S.F. 3.6%
D. METAL PANEL - SLATE GREY	683 S.F. 26.3%
E. SMOOTH CMU - GREY STONE	265 S.F. 10.2%
F. PRECAST CONCRETE - GRAY	372 S.F. 14.3%
G. METAL CORNICE - CITYSCAPE	120 S.F. 4.6%

EAST FACADE MATERIALS CALCULATIONS:

TOTAL FACADE AREA:	909 S.F.
MATERIALS USED	TOTAL AREA (%)
A. STUCCO - NEBULOUS WHITE	310 S.F. 34.1%
B. NAVEL ORANGE - ACCENT COLOR	20 S.F. 2.2%
C. ELECTRIC LIME - ACCENT COLOR	37 S.F. 4.1%
D. METAL PANEL - SLATE GREY	202 S.F. 22.2%
E. SMOOTH CMU - GREY STONE	94 S.F. 10.3%
F. PRECAST CONCRETE - GRAY	92 S.F. 10.1%
G. METAL CORNICE - CITYSCAPE	40 S.F. 4.4%

WEST FACADE MATERIALS CALCULATIONS:

TOTAL FACADE AREA:	914 S.F.
MATERIALS USED	TOTAL AREA (%)
A. STUCCO - NEBULOUS WHITE	345 S.F. 37.7%
B. NAVEL ORANGE - ACCENT COLOR	16 S.F. 1.8%
C. ELECTRIC LIME - ACCENT COLOR	36 S.F. 3.9%
D. METAL PANEL - SLATE GREY	203 S.F. 22.2%
E. SMOOTH CMU - GREY STONE	94 S.F. 10.3%
F. PRECAST CONCRETE - GRAY	154 S.F. 16.8%
G. METAL CORNICE - CITYSCAPE	41 S.F. 4.5%



WALL SECTION AT EIFS REVEAL
SCALE: 3/4" = 1'-0"



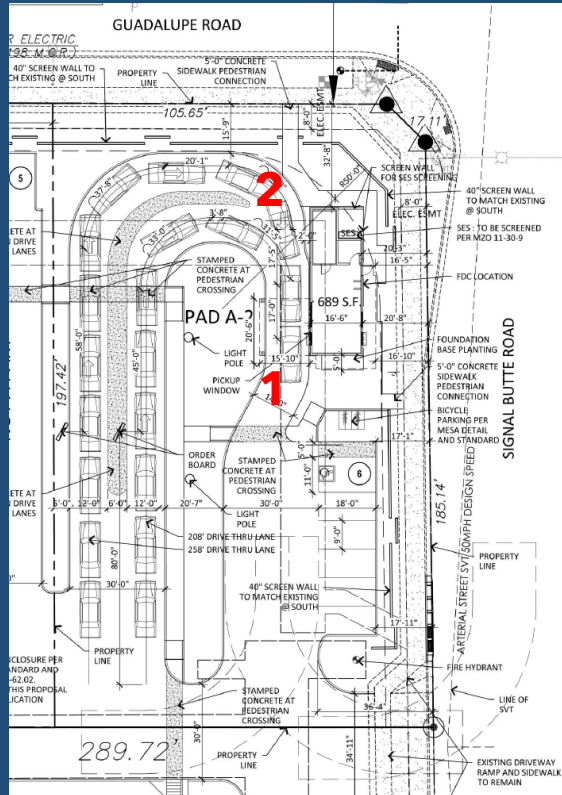
SALAD AND GO
2814 S. SIGNAL BUTTE ROAD
MESA ARIZONA 85212
DATE: 06-30-2020 (REVISED)



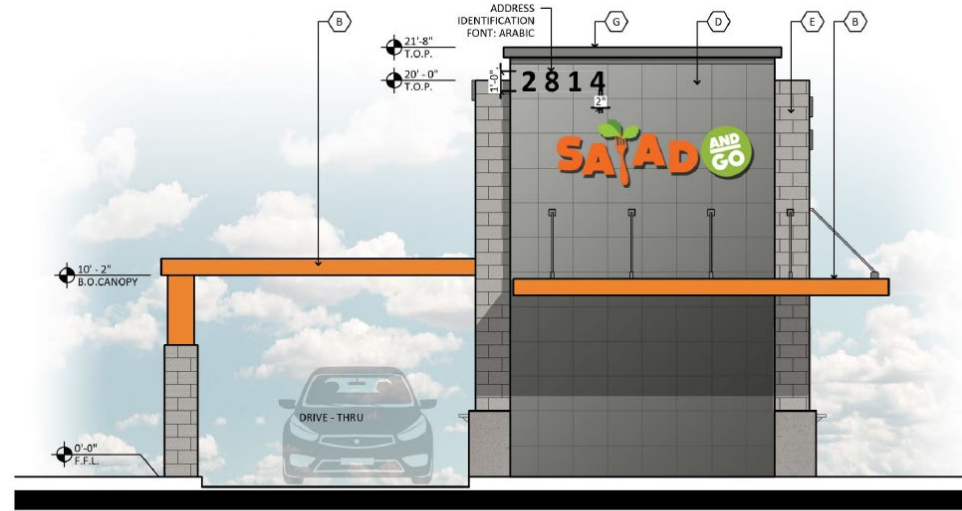
EL-1
PAD A-2
RKA# 19245.00



Elevations



1



SOUTH ELEVATION

SCALE: 1/4" = 1'-0"

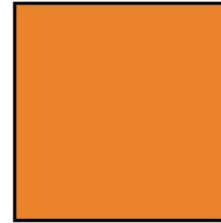
2



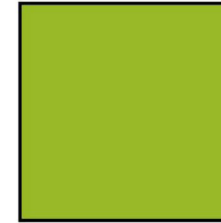
Colors & Materials



A PAINT:
MFG: SHERWIN WILLIAMS
COLOR: NEBULOUS WHITE
SPEC #: SW 7004 256-C2
LRV: 74



B PAINT:
MFG: SHERWIN WILLIAMS
COLOR: NAVEL
SPEC #: SW 6887 116-C5
LRV: 35



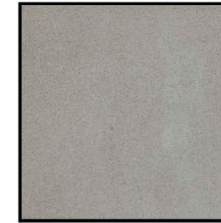
C PAINT:
MFG: SHERWIN WILLIAMS
COLOR: ELECTRIC LIME
SPEC #: SW 6921 146-C3
LRV: 42



D METAL PANEL:
MFG: MBCI
SPEC: CF ARCHITECTURAL
PANEL
COLOR: SLATE GRAY



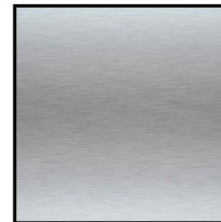
E 8X8X16 CMU:
MFG: SUPERLITE
COLOR: GRAY STONE
FINISH: SMOOTH



F PRE-CAST CONCRETE:
MFG: CORESLAB
COLOR: DAVIS COLORS
LIGHT GRAY (15%)
(CARBON) *8084
FINISH: FORM LINER (SMOOTH)
AGGREGATE: SAND



G METAL CORNICE:
COLOR: CITYSCAPE
SPEC #: SW7067
LRV: 22



H ALUMINUM STOREFRONT:
MFG: KAWNEER
FINISH: CLEAR ANODIZED



I SCREEN WALL:
MFG: TREX
COLOR: WINCHESTER GREY

SALAD AND GO
2814 S. SIGNAL BUTTE ROAD
MESA, ARIZONA 85212
DATE: 06-23-2020 (PRELIMINARY)

MB-1
RCAA# 19245.00



Lighting



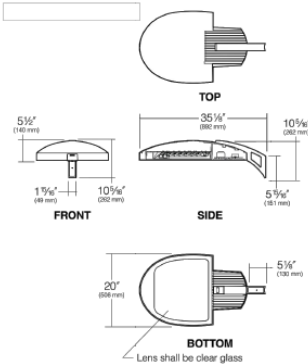
Job: SA
Catalog number:

Mfg. Fracture	Electrical Module	Finish	Options
	See page 2		See pages 3-4

Select pole from Kim's Arms and Poles Selection Guide. If pole is provided by others indicate O.D. for arm fitting.

Specifications

WP9L-LED
Large Electronic
120 Light Emitting Diodes
Total Max System Watts = 130W
Maximum weight = 50 lbs.



Housing: One-piece die-cast, low copper (<0.6% Cu) aluminum alloy with integral cooling ribs over the electrical compartment. Solid barrier wall separates optical and electrical compartments. A single die-cast aluminum cam-latch provides positive locking and sealing of the optical chamber. A one-piece extruded and vulcanized silicone gasket seals the housing against the lens surface.

Lens: Clear 3/8" thick tempered glass lens retained by a stainless steel piano hinge and a single die-cast aluminum cam-latch. The edges are chamfered to conceal the outer portion of the housing.

Electronic Module: All electrical components are UL and CSA recognized, mounted on a single plate and factory prewired with quick-disconnect plugs. Module includes a driver, thermal control device and surge protector. Electrical module attaches to housing with no-screw hinges and latches, accessible by opening the lens frame only. Driver is rated for 40°F starting and has a 0-10V dimming interface for multi-level illumination options.

Optical Module: Precision, replaceable PicoEmitter are positioned to achieve directional control toward desired task. The entire EmitterDeck® fastens to the housing as a one-piece module.

Dimming: The WARP9 LED luminaire can be dimmed from 0% to 100% by the use of its standard 0-10V Interface driver. To activate the dimming system, a wiring harness is supplied and attached to the DIM Port (DIM IN) on the LifeShield® Protection System. This port allows the 0-10V Interface to bypass the LifeShield and control the driver. The LifeShield works in conjunction with the control system to assure that overheating will not harm the LEDs. The wiring harness is connected with the use of the Purple lead as the positive (+) and the Grey lead as the negative (-) to an available control signal (by others).

Support Arm: Heavy cast, low copper aluminum alloy with stainless steel mounting bolts. A pole reinforcing plate is provided with wire strain relief. Arm is circular cut for specified rod pole.

Finish: Each luminaire receives a fade and abrasion resistant, electrostatically applied, thermally cured, triglycidyl isocyanurate (TGIC) polyester powdercoat finish. Standard colors include (BU) Black, (DB) Dark Bronze, (WH) White, (PS) Platinum Silver, (SC) Stealth Gray, (LG) Light Gray, and (CC) Custom Color (include RAL#).

Listed to: UL 1598 Standard for Luminaires - UL 8750 Standard for Safety for Light Emitting Diode (LED) Equipment for use in Lighting Products and CSA C22.2-250.0 Luminaires. RoHS compliant. Meets Buy American provisions within ARRA.

Warranty: Kim Lighting warrants WARP9 LED products ("Products") sold by Kim Lighting to be free from defects in material and workmanship for (i) a period of five (5) years for metal parts, (ii) a period of ten (10) years for exterior housing paint finishes, (iii) a period of six (6) years for LED Light Engines (PicoEmitters) and, (iv) a period of five (5) years for LED power components (LED Driver, LifeShield device, Surge Protector), from the date of sale of such goods to the buyer as specified in Kim Lighting shipment documents for each product.

CAUTION: Fixtures must be grounded in accordance with national, state and/or local electrical codes. Failure to do so may result in serious personal injury.



KIM LIGHTING RESERVES THE RIGHT TO CHANGE SPECIFICATIONS WITHOUT NOTICE.
© 2014 KIM LIGHTING • 16555 EAST GALE AVENUE, CITY OF INDUSTRY, CA 91745-1788 • TEL: 626/988-5666 • FAX: 626/968-5716

WP9L-LED
WARP9® Large PicoEmitter™ LED
revision 8/18/14 • kim_wp9leled_spec.pdf

Approvals:

Date: Page: 1 of 6



FEATURES & SPECIFICATIONS

INTENDED USE — Typical applications include corridors, lobbies, conference rooms and private offices.

CONSTRUCTION — Galvanized steel mounting/adjuster frame, galvanized steel junction box with bottom-hinged access covers and spring latches. Reflectors are retained by torsion springs.

Vertically adjustable mounting brackets with commercial bar hangers provide 3-3/4" total adjustment. Two combination 1/2"-3/4" and four 1/2" brackets for straight-through conduit runs. Capacity: 8 (4 in, 4 out), 16 (12 AWG conductors, rated for 90°C).

Accommodates 12"-24" joint spacing.

Passive cooling thermal management for 25°C standard; high ambient (40°C) option available. Light engine and drivers are accessible from above or below ceiling.

Max ceiling thickness: 1-1/2".

OPTICS — LEDs are bonded to a 3-step SDCM, 80 CRH minimum. LED light source concealed with diffusing optical lens.

General illumination lighting with 1.0 S/W and 55° cutoff to source and source louver.

Self-flanged and/or reflector in specular, semi-specular, or matte diffuse finishes. Also available in white and black painted reflectors.

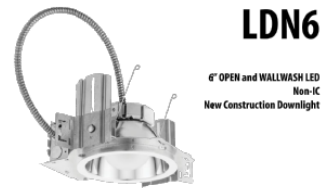
ELECTRICAL — Multi-wire (120-277V, 50/60Hz) 0-10V dimming drivers mounted to junction box, 10% or 70% lumen maintenance at 50,000 hours.

LISTINGS — Certified to US and Canadian safety standards. Dump location standard level location, covered ceiling optional. ENERGY STAR® certified product.

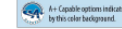
WARRANTY — 5-year limited warranty. Complete warranty terms located at: www.lithonia.com/CustomerServiceTerms_and_Conditions.aspx

Note: Actual performance may differ as a result of end-user environment and application. All values are design or typical values, measured under laboratory conditions at 25°C. Specifications subject to change without notice.

Catalog Number	
Notes	
Type	SD-SDE



LDN6



Lead times will vary depending on options selected. Consult with your sales representative. Example: LDN6 35/15 LOGAR LSS MVOLT E210

LDN6 Series	Color temperature	Lumens ¹	Aperture/Trim Color	Finish	Multi-volt	
LDN6 4" round	27/ 2700K	05 500 lumens	L06 Downlight	AR Clear	LSS Semi-specular	MVOLT Multi-volt
	30/ 3000K	10 1000 lumens	L06 Wallwash	WR White	LD Matte diffuse	L20 L20V
	35/ 3500K	15 1500 lumens		BR Black	LS Specular	L27 L27V
	40/ 4000K	20 2000 lumens				L34* L34V
	50/ 5000K	30 3000 lumens				

Driver	Opt ons	899*	899*
GZ10 0-10V driver dims to 10%	SP ¹ Single fuse	899*	nLight™ Lumen Compensation
GZ1 0-10V driver dims to 1%	TRW ² White painted flange	1951/86Z ²	nLight™ dimming pack controls 0-10V e-oldLED drivers (E210, E215)
EZ10 0-10V e-oldLED driver with smooth and flicker-free deep dimming performance down to 10%	EL Black painted flange	1951/86Z ²	nLight™ dimming pack controls 0-10V e-oldLED drivers (E210, E215) ER control fixtures on emergency circuit.
EZ1 0-10V e-oldLED driver with smooth and flicker-free deep dimming performance down to 1%	ELR Emergency battery pack with remote test switch. Not Certified in CA Title	840 ³	High ambient option
EZ1 0-10V e-oldLED driver with smooth and flicker-free deep dimming performance down to 1%	ELSD Emergency battery pack with self diagnostics, remote test switch. Not Certified in CA Title 20 MAEDBS	WL	Wet Location, specify for exterior use applications
E10WCP 0-10V e-oldLED driver with smooth and flicker-free deep dimming performance down to 1%	ELSDS Emergency battery pack, 10W Constant Power with integral test switch. Certified in CA Title 20 MAEDBS	BLTAUR2 ⁴	BLTAUR2 ⁴ ready luminaire connectors enable a simple and consistent factory installed option across all ABL luminaire brands. Refer to ABL for complete nomenclature. Available only in USA, AUS, NZL, and EROCELS.
E10WCP 0-10V e-oldLED driver with smooth and flicker-free deep dimming performance down to 1%	E10WCP Emergency battery pack, 10W Constant Power with integral test switch. Certified in CA Title 20 MAEDBS	BLTAUR2 ⁴	nLight™ Air enabled
NPP10P 0-10V e-oldLED driver with smooth and flicker-free deep dimming performance down to 1%	E10WCP Emergency battery pack, 10W Constant Power with integral test switch. Certified in CA Title 20 MAEDBS	ESPM	nLight™ Air Dimming Pack Wireless Controls. Controls fixtures on emergency circuit
NPP10P 0-10V e-oldLED driver with smooth and flicker-free deep dimming performance down to 1%	NPP10P nLight™ network power/relay pack with 0-10V dimming for non-e-oldLED drivers (E210, E215)		US point of manufacture
NPP10P 0-10V e-oldLED driver with smooth and flicker-free deep dimming performance down to 1%	NPP10P nLight™ network power/relay pack with 0-10V dimming for non-e-oldLED drivers (E210, E215). ER controls fixtures on emergency circuit.		

Accessories: Order as separate catalog number.

EIC 0208 325	Compact battery/backup emergency AC power system
EIC 0208 325	Compact battery/backup emergency AC power system
GRAB IZ	Over-sized trim ring with 4" outside diameter ¹
SC46	Sloped ceiling adapter. Refer to ITC/SCA for more options.

- Notes**
- 1 Dimensional data on page 3
 - 2 Not available with finishes.
 - 3 Not available with emergency options.
 - 4 Must specify voltage (L20 or L27).
 - 5 Available with clear/IR reflector only.
 - 6 Specify voltage, ER for use with generator supply EM power.
 - 7 Will require an emergency hot lead and/or normal hot lead.
 - 8 Driver begins at 60W light level. Marked by specified with NPS9E2 or NPS9A2 (ER, only available with E210 and E215 drivers).
 - 8 Not available with CP, NPS9E2, NPS9A2, NPP10, NPP10B or HIG options.
 - 9 NPS9E2 and NPS9A2 not recommended for metal ceiling installations.
 - 10 Fixture height is 4.5" for lumen packages with HIG.
 - 11 Must specify voltage for 2000lm, 5000lm with marked shading, 20, 20V, 18V, 18V, 18V. Not available with emergency battery pack option.

Design Guidelines

Section 11-6-3

- | | |
|---|--|
| ✓ | Design incorporates multiple materials |
| ✓ | Varied building height |
| ✓ | Building orientation faces street |

Summary

Findings

- ✓ Staff has no major concerns
- ✓ Project meets MZO requirements
- ✓ Staff welcomes any feedback